

— WE CREATE MOBILE WORKPLACES —



OPEL

Combo, Vivaro & Movano



SYSTEM 
EDSTRÖM

OPEL COMBO L1

For price information, mounting time and content in our van racking packages, scan the QR code on the first page.

On electric and hybrid vans we recommend mounting by an experienced installer. Batteries and cable harnesses for approximately 400 volt must be taken in consideration. Cost of a floor may be added.



Art.No	LxDxH	Kg
F43100	1239x300x890 mm	22



Art.No	LxDxH	Kg
F43101	724x300x890 mm	30



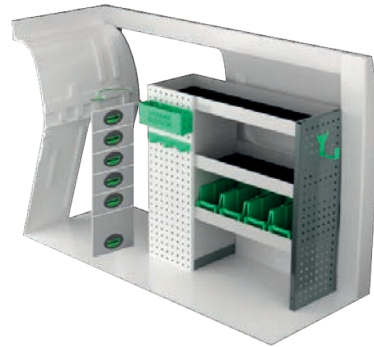
Art.No	LxDxH	Kg
F43102	1285x300x890 mm	47



Art.No	LxDxH	Kg
F43103	848x300x890 mm	21



Art.No	LxDxH	Kg
F43104	1239x300x890 mm	40



Art.No	LxDxH	Kg
F43105	939x300x890 mm	41



Art.No	Height	Kg
F43114	250	82



Art.No	Height	Kg
F43117	470	89

OPEL COMBO L2

For price information, mounting time and content in our van racking packages, scan the QR code on the first page.

On electric and hybrid vans we recommend mounting by an experienced installer. Batteries and cable harnesses for approximately 400 volt must be taken in consideration. Cost of a floor may be added.



Art.No	LxDxH	Kg
F43120	1662x300x890 mm	25



Art.No	LxDxH	Kg
F43121	1138x300x890 mm	47



Art.No	LxDxH	Kg
F43122	1619x300x890 mm	51



Art.No	LxDxH	Kg
F43123	1138x300x1000 mm	47



Art.No	LxDxH	Kg
F43124	1662x300x890 mm	50



Art.No	LxDxH	Kg
F43125	1107x300x890 mm	59



Art.No	Height	Kg
F43134	250	92

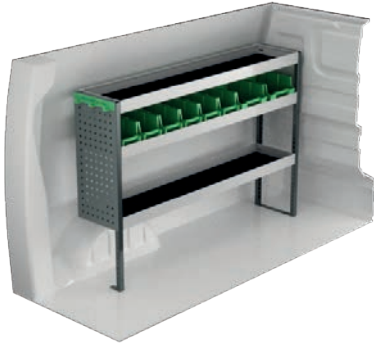


Art.No	Height	Kg
F43137	470	100

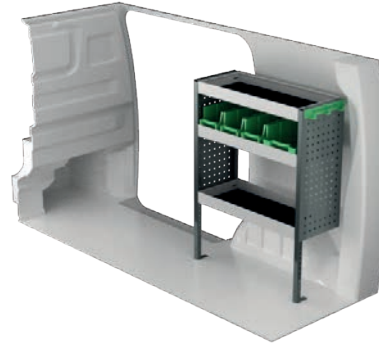
OPEL VIVARO L1H1

For price information, mounting time and content in our van racking packages, scan the QR code on the first page.

On electric and hybrid vans we recommend mounting by an experienced installer. Batteries and cable harnesses for approximately 400 volt must be taken in consideration. Cost of a floor may be added.



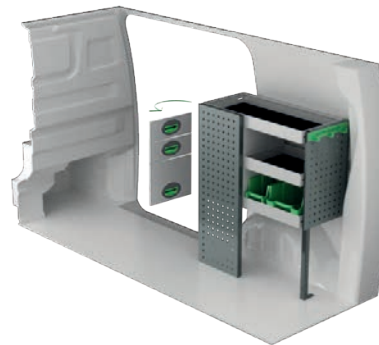
Art.No	LxDxH	Kg
F42100	1452x300x1000 mm	27



Art.No	LxDxH	Kg
F42101	758x300x1000 mm	17



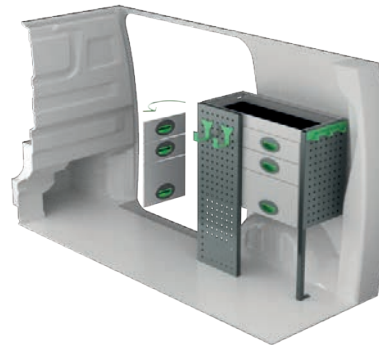
Art.No	LxDxH	Kg
F42102	1452x300x890 mm	37



Art.No	LxDxH	Kg
F42103	726x300x890 mm	26



Art.No	LxDxH	Kg
F42104	1452x300x1000 mm	44



Art.No	LxDxH	Kg
F42105	726x300x890 mm	35



Art.No	Height	Kg
F42111	250	92

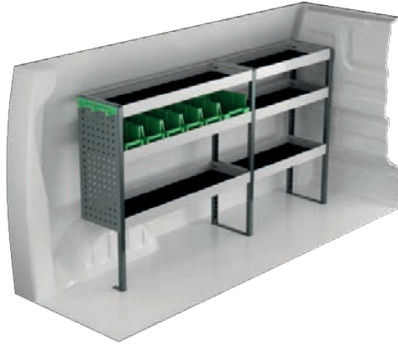


Art.No	Height	Kg
F42115	470	100

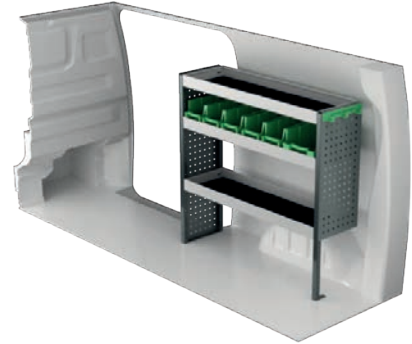
OPEL VIVARO L2H1

For price information, mounting time and content in our van racking packages, scan the QR code on the first page.

On electric and hybrid vans we recommend mounting by an experienced installer. Batteries and cable harnesses for approximately 400 volt must be taken in consideration. Cost of a floor may be added.



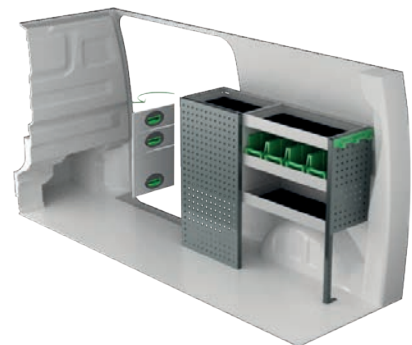
Art.No	LxDxH	Kg
F42120	1785x300x1000 mm	31



Art.No	LxDxH	Kg
F42121	1061x300x1000 mm	23



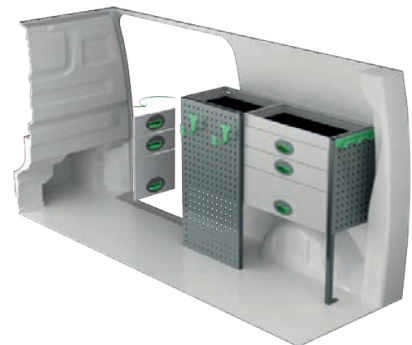
Art.No	LxDxH	Kg
F42122	1785x300x890 mm	42



Art.No	LxDxH	Kg
F42123	1107x300x890 mm	35



Art.No	LxDxH	Kg
F42124	1785x300x1000 mm	51



Art.No	LxDxH	Kg
F42125	1107x300x890 mm	46



Art.No	Height	Kg
F42134	250	99

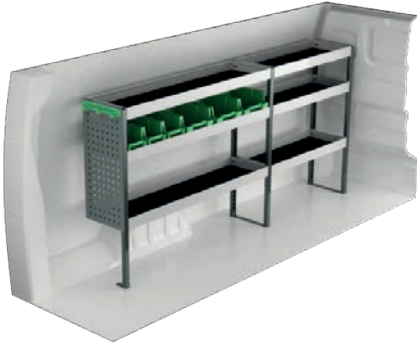


Art.No	Height	Kg
F42136	470	123

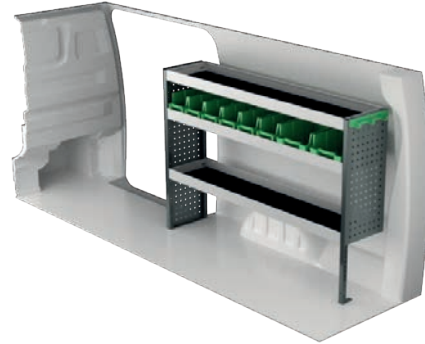
OPEL VIVARO L3H1

For price information, mounting time and content in our van racking packages, scan the QR code on the first page.

On electric and hybrid vans we recommend mounting by an experienced installer. Batteries and cable harnesses for approximately 400 volt must be taken in consideration. Cost of a floor may be added.



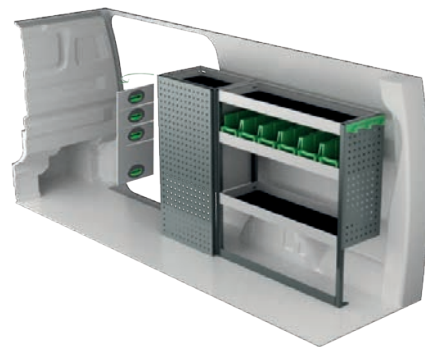
Art.No	LxDxH	Kg
F42140	2054x300x1000 mm	34



Art.No	LxDxH	Kg
F42141	1453x300x1000 mm	28



Art.No	LxDxH	Kg
F42142	2054x300x890 mm	46



Art.No	LxDxH	Kg
F42143	1440x300x1000 mm	49



Art.No	LxDxH	Kg
F42144	2054x300x1000 mm	54



Art.No	LxDxH	Kg
F42145	1440x300x890 mm	56



Art.No	Height	Kg
F42154	250	105

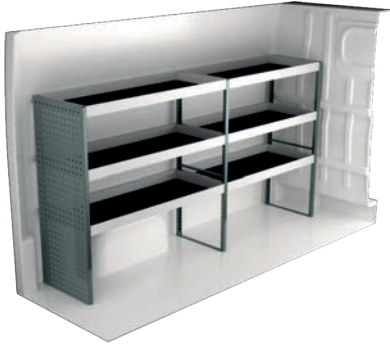


Art.No	Height	Kg
F42156	470	129

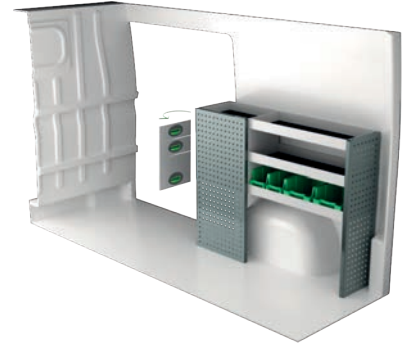
OPEL MOVANO L1H1

For price information, mounting time and content in our van racking packages, scan the QR code on the first page.

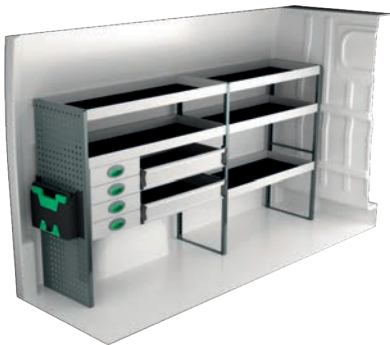
On electric and hybrid vans we recommend mounting by an experienced installer. Batteries and cable harnesses for approximately 400 volt must be taken in consideration. Cost of a floor may be added.



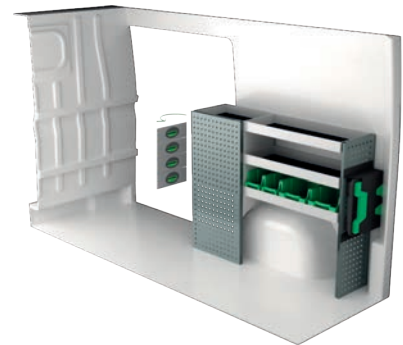
Art.No	LxDxH	Kg
F45020	2270x470x1220 mm	53



Art.No	LxDxH	Kg
F45021	1287x300x1000 mm	38



Art.No	LxDxH	Kg
F45022	2355x470x1220 mm	83



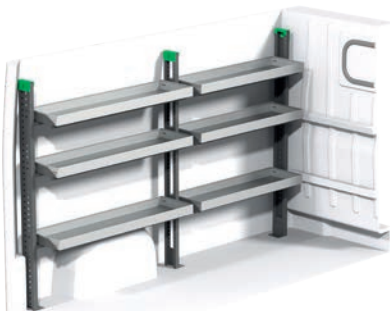
Art.No	LxDxH	Kg
F45023	1372x300x1000 mm	44



Art.No	LxDxH	Kg
F45024	2270x300x1515 mm	89



Art.No	LxDxH	Kg
F45025	1287x300x1000 mm	51



Art.No	LxDxH	Kg
F45026	2358x300x1788 mm	67



Art.No	LxDxH	Kg
F45027	1284x300x1788 mm	39

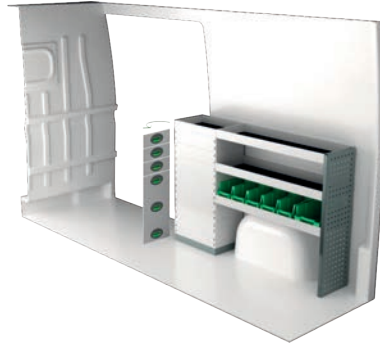
OPEL MOVANO L2H2

For price information, mounting time and content in our van racking packages, scan the QR code on the first page.

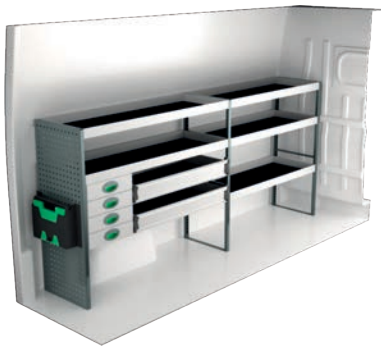
On electric and hybrid vans we recommend mounting by an experienced installer. Batteries and cable harnesses for approximately 400 volt must be taken in consideration. Cost of a floor may be added.



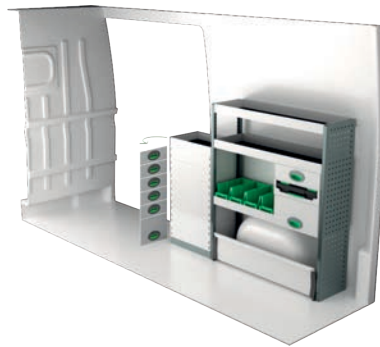
Art.No	LxDxH	Kg
F45040	2662x470x1220 mm	59



Art.No	LxDxH	Kg
F45041	1500x300x1000 mm	55



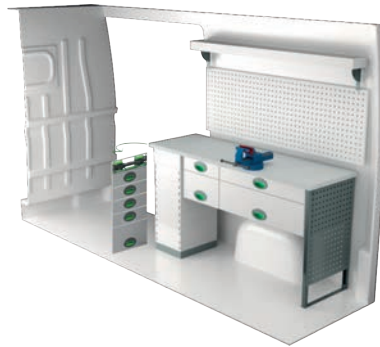
Art.No	LxDxH	Kg
F45042	2747x470x1220 mm	90



Art.No	LxDxH	Kg
F45043	1532x300x1220 mm	70



Art.No	LxDxH	Kg
F45044	2662x300x1735 mm	111



Art.No	LxDxH	Kg
F45045	1509x470x855 mm	94



Art.No	LxDxH	Kg
F45046	2750x470x1788 mm	83

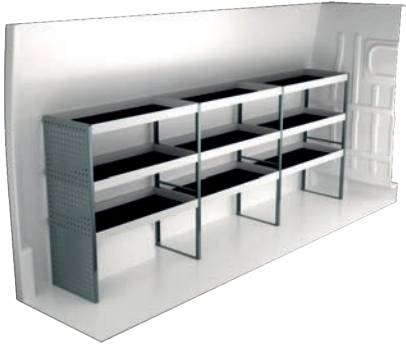


Art.No	LxDxH	Kg
F45047	1497x470x1788 mm	48

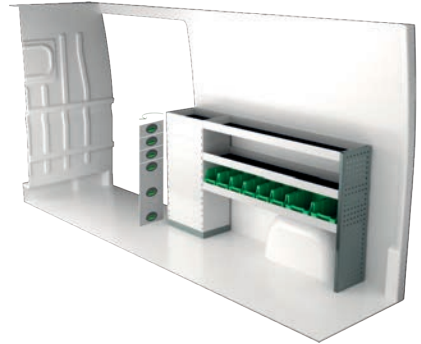
OPEL MOVANO L3H2

For price information, mounting time and content in our van racking packages, scan the QR code on the first page.

On electric and hybrid vans we recommend mounting by an experienced installer. Batteries and cable harnesses for approximately 400 volt must be taken in consideration. Cost of a floor may be added.



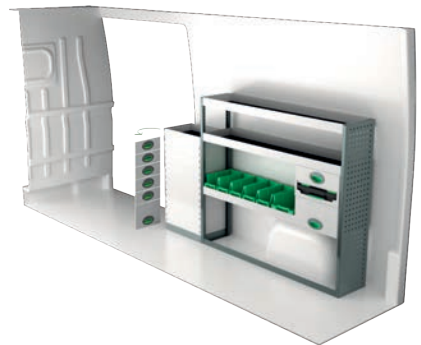
Art.No	LxDxH	Kg
F45060	3120x470x1220 mm	72



Art.No	LxDxH	Kg
F45061	1892x300x1000 mm	60



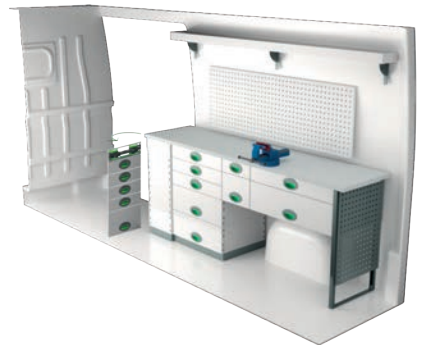
Art.No	LxDxH	Kg
F45062	3086x470x1220 mm	112



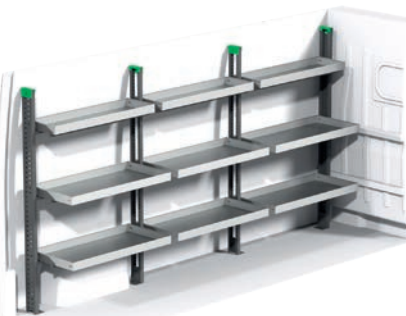
Art.No	LxDxH	Kg
F45063	1924x300x1220 mm	75



Art.No	LxDxH	Kg
F45064	3265x300x1735 mm	146



Art.No	LxDxH	Kg
F45065	2024x470x855 mm	144



Art.No	LxDxH	Kg
F45066	3253x470x1788 mm	104

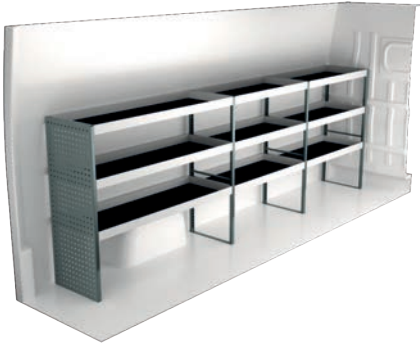


Art.No	LxDxH	Kg
F45067	1966x470x1788 mm	67

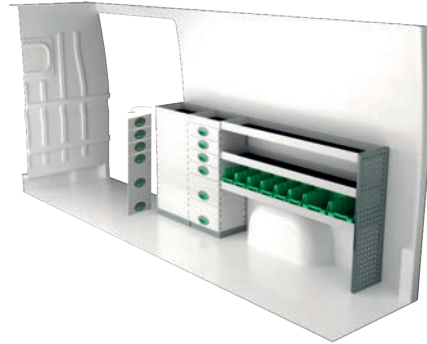
OPEL MOVANO L4H2

For price information, mounting time and content in our van racking packages, scan the QR code on the first page.

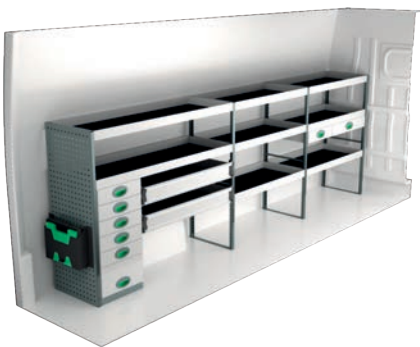
On electric and hybrid vans we recommend mounting by an experienced installer. Batteries and cable harnesses for approximately 400 volt must be taken in consideration. Cost of a floor may be added.



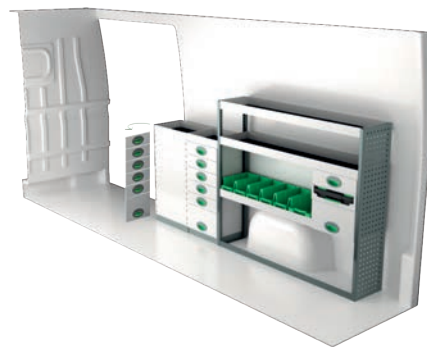
Art.No	LxDxH	Kg
F45080	3512x470x1220 mm	78



Art.No	LxDxH	Kg
F45081	2284x300x1000 mm	88



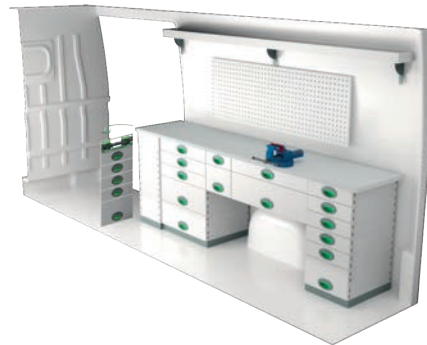
Art.No	LxDxH	Kg
F45082	3597x470x1220 mm	134



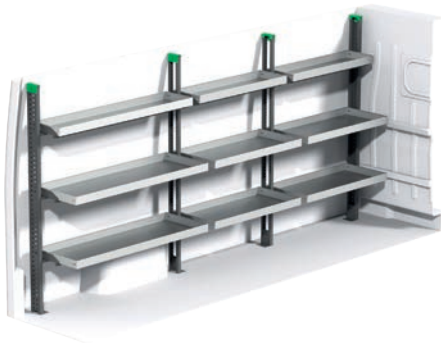
Art.No	LxDxH	Kg
F45083	2316x300x1220 mm	102



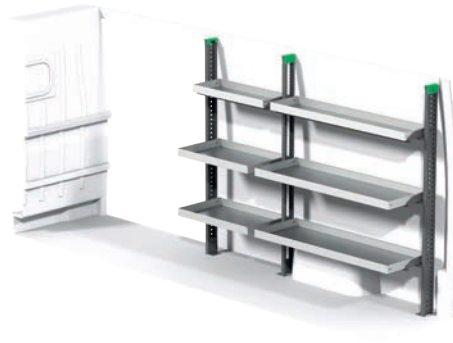
Art.No	LxDxH	Kg
F45084	3512x300x1735 mm	159



Art.No	LxDxH	Kg
F45085	2383x470x855 mm	189



Art.No	LxDxH	Kg
F45086	3645x470x1788 mm	112



Art.No	LxDxH	Kg
F45087	2358x470x1788 mm	75

INFORMATION



GENERALLY

The kits include what you see in the drawing as well as installation parts, rubber mats to all shelves and foam to the drawers.

System Edström Bilinredningar AB is certified according to SS-EN ISO 9001:2015 to secure the administrative quality and to give us the possibility to keep a high accuracy on deliveries.

All material used in System Edström can be recycled to 100%. We are also certified according to SS-EN ISO 14001:2015.



REMEMBER

Now that you have chosen to have System Edström in your vehicle you have taken the first and most important step to make your mobile workshop safe and functional. From here on it is up to you how safe and functional your working place will be.

Remember;

You as the driver has the full responsibility if you or any one else is injured if the cargo is poorly secured. It is also your responsibility to make sure that the interior is mounted in the safest way possible whatever your choice of workshop, even if they are professionals with knowhow and long experience.



SECURITY

We crash test our racking continuously at RISE Research Institute of Sweden AB. The crash tests are carried out according to the standard INRS NS 286 which applies to van racking.

Other types of tests are also carried out at test institutes, for example shake tests that simulate several years of use on the road. We also carry out our own tensile and pressure tests, to check, for example, the strength of load securing products.

Find out more about our company and products at www.systemedstrom.com.

4370, 4364, 4362, 4360

Pegboard tray

Depth	Width	Height	Kg	Part.No
82	200	80	0,5	4360
82	285	102	0,8	4362
122	455	122	1,5	4364
153	179	575	3,0	4370

A number of different trays that solve (almost) all storage problems.

4356, 4357, 2706, 2708

Universal hook/ Clothes hook

Depth	Width	Height	Kg	Part.No
31	295	40	0,3	2706
31	465	40	0,5	2708
85	80	100	0,2	4356
61	83	55	0,1	4357

4077, 4349

Hose/Cable rack

Depth	Width	Height	Kg	Part.No
79	267	168	0,5	4077

Tube holder

66	194	123	0,4	4349
----	-----	-----	-----	------

Internal ladder holder

Length	Kg	Part.No
2400	5,5	T8900

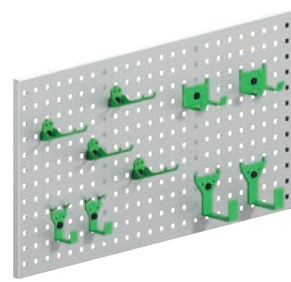
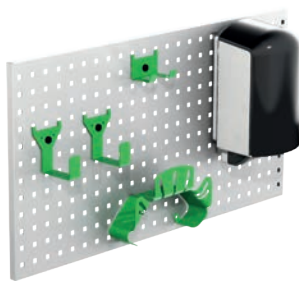
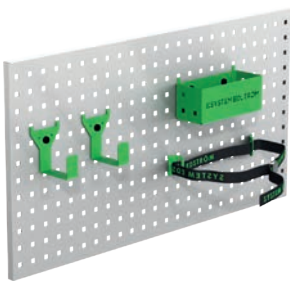
Store your ladder on the inside of the roof, pull it back to the rear door in a simple operation. The aluminum rail comes in two parts with a joining piece.



Accessory package No. 1

Accessory package No. 2

Accessory package No. 3



Art Nr

F11001

Pegboard not included.

Art Nr

F11002

Pegboard not included.

Art Nr

F11004

Pegboard not included.

www.systemedstrom.com



WARRANTY



SAFETY



QUALITY

SYSTEM EDSTRÖM

SYSTEM EDSTRÖM BILINREDNINGAR AB
Raseborgsgatan 11
164 74 Kista
Sweden

CONTACT
Order +46 (0)10 102 95 00
Sales +46 (0)10 102 95 01
Switchboard +46 (0)8 590 920 20
info@edstrom.se