

— WE CREATE MOBILE WORKPLACES —



MERCEDES

Citan, Vito & Sprinter

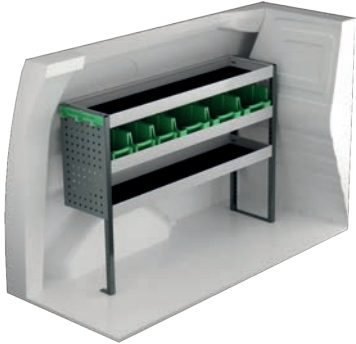


SYSTEM 
EDSTRÖM

MERCEDES CITAN L1

For price information, mounting time and content in our van racking packages, scan the QR code on the first page.

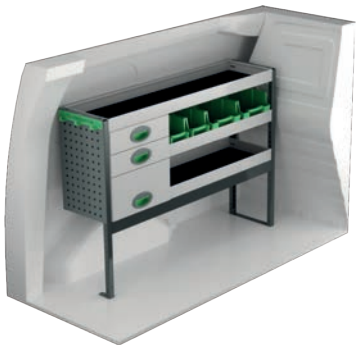
On electric and hybrid vans we recommend mounting by an experienced installer. Batteries and cable harnesses for approximately 400 volt must be taken in consideration. Cost of a floor may be added.



Art.No	LxDxH	Kg
F42320	1239x300x890 mm	23



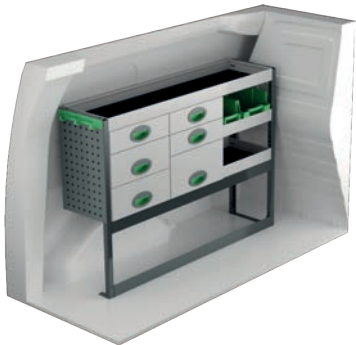
Art.No	LxDxH	Kg
F42321	848x300x890 mm	17



Art.No	LxDxH	Kg
F42322	1239x300x890 mm	32



Art.No	LxDxH	Kg
F42323	804x300x890 mm	31



Art.No	LxDxH	Kg
F42324	1239x300x890 mm	43



Art.No	LxDxH	Kg
F42325	804x300x890 mm	40



Art.No	Height	Kg
F42334	250	84

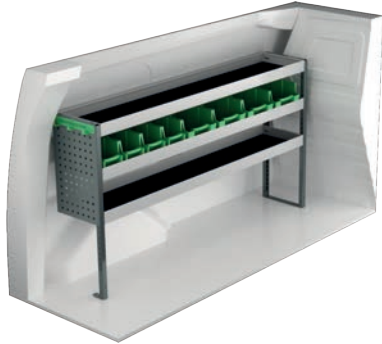


Art.No	Height	Kg
F42337	470	75

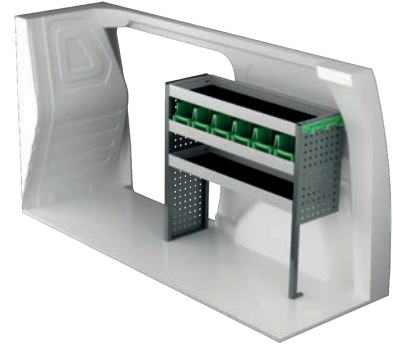
MERCEDES CITAN L2

For price information, mounting time and content in our van racking packages, scan the QR code on the first page.

On electric and hybrid vans we recommend mounting by an experienced installer. Batteries and cable harnesses for approximately 400 volt must be taken in consideration. Cost of a floor may be added.



Art.No	LxDxH	Kg
F42340	1631x300x890 mm	28



Art.No	LxDxH	Kg
F42341	971x300x890 mm	22



Art.No	LxDxH	Kg
F42342	1631x300x890 mm	39



Art.No	LxDxH	Kg
F42343	894x300x890 mm	32



Art.No	LxDxH	Kg
F42344	1572x300x890 mm	47



Art.No	LxDxH	Kg
F42345	894x300x890 mm	41



Art.No	Height	Kg
F42351	250	90

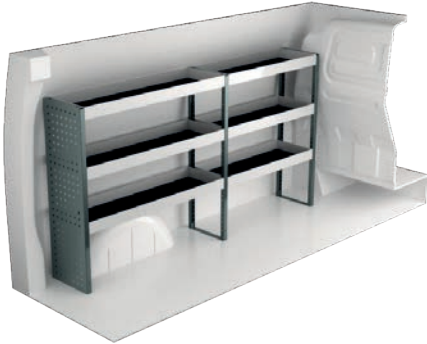


Art.No	Height	Kg
F42353	470	102

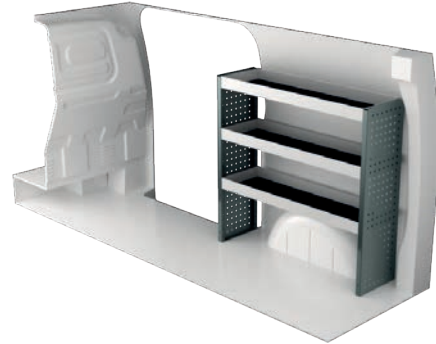
MERCEDES VITO L1

For price information, mounting time and content in our van racking packages, scan the QR code on the first page.

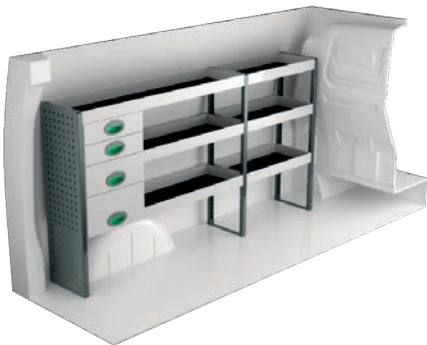
On electric and hybrid vans we recommend mounting by an experienced installer. Batteries and cable harnesses for approximately 400 volt must be taken in consideration. Cost of a floor may be added.



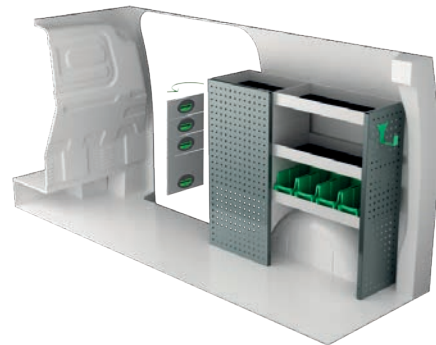
Art.No	LxDxH	Kg
F41700	1875x300x1000 mm	30



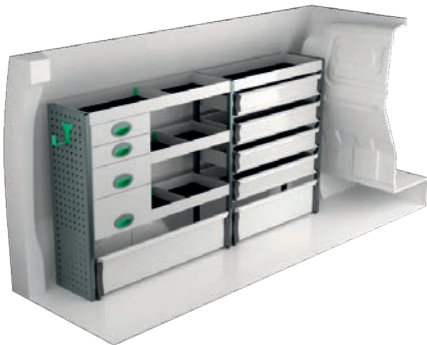
Art.No	LxDxH	Kg
F41701	1061x300x1000 mm	21



Art.No	LxDxH	Kg
F41702	1875x300x1000 mm	44



Art.No	LxDxH	Kg
F41703	1107x300x1000 mm	41



Art.No	LxDxH	Kg
F41704	1875x300x1000 mm	62



Art.No	LxDxH	Kg
F41705	1061x300x1000 mm	33



Art.No	Height	Kg
F41716	250	99

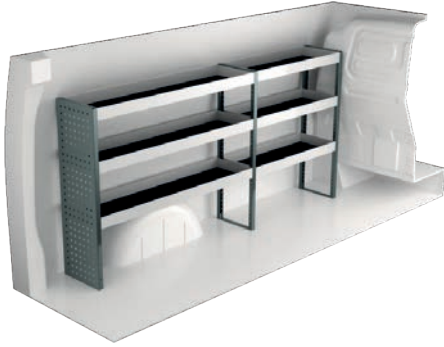


Art.No	Height	Kg
F41718	470	108

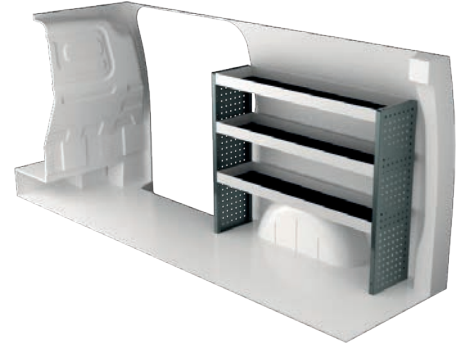
MERCEDES VITO L2

For price information, mounting time and content in our van racking packages, scan the QR code on the first page.

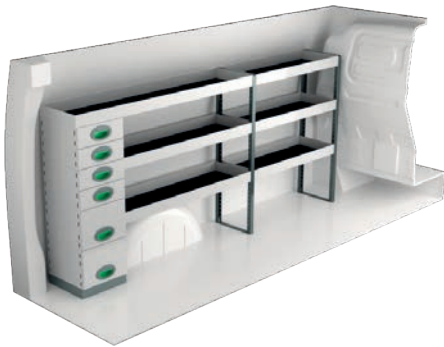
On electric and hybrid vans we recommend mounting by an experienced installer. Batteries and cable harnesses for approximately 400 volt must be taken in consideration. Cost of a floor may be added.



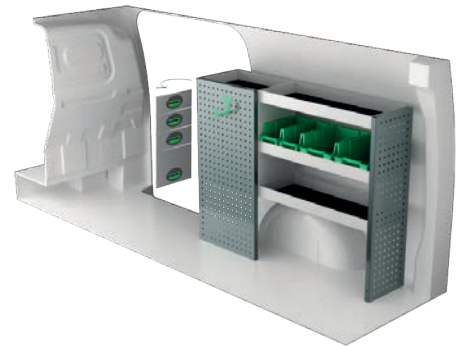
Art.No	LxDxH	Kg
F41720	2054x300x1000 mm	32



Art.No	LxDxH	Kg
F41721	1240x300x1000 mm	23



Art.No	LxDxH	Kg
F41722	2145x300x1000 mm	51



Art.No	LxDxH	Kg
F41723	1286x300x1000 mm	43



Art.No	LxDxH	Kg
F41724	2054x300x1000 mm	59



Art.No	LxDxH	Kg
F41725	1240x300x1000 mm	37



Art.No	Height	Kg
F41736	250	111

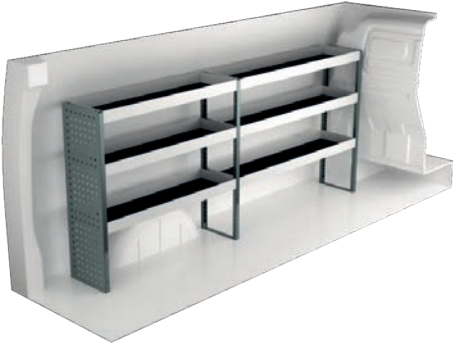


Art.No	Height	Kg
F41738	470	117

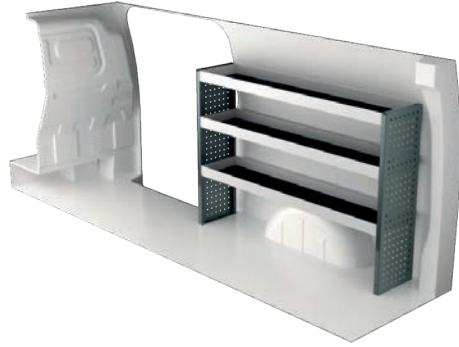
MERCEDES VITO L3

For price information, mounting time and content in our van racking packages, scan the QR code on the first page.

On electric and hybrid vans we recommend mounting by an experienced installer. Batteries and cable harnesses for approximately 400 volt must be taken in consideration. Cost of a floor may be added.



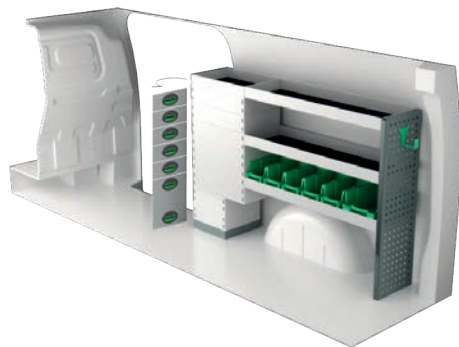
Art.No	LxDxH	Kg
F41740	2267x300x1000 mm	36



Art.No	LxDxH	Kg
F41741	1453x300x1000 mm	26



Art.No	LxDxH	Kg
F41742	2267x300x1000 mm	49



Art.No	LxDxH	Kg
F41743	1499x300x1000 mm	56



Art.No	LxDxH	Kg
F41744	2267x300x1000 mm	66



Art.No	LxDxH	Kg
F41745	1240x470x1000 mm	48



Art.No	Height	Kg
F41756	250	120

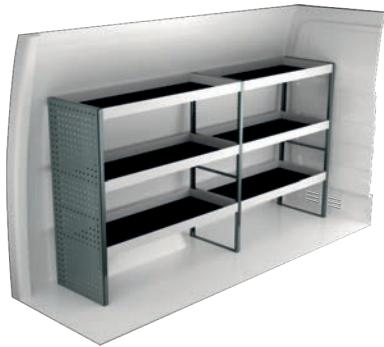


Art.No	Height	Kg
F41758	470	146

MERCEDES SPRINTER L1

For price information, mounting time and content in our van racking packages, scan the QR code on the first page.

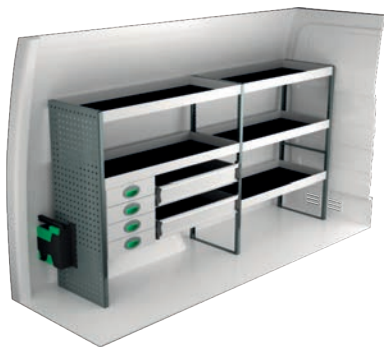
On electric and hybrid vans we recommend mounting by an experienced installer. Batteries and cable harnesses for approximately 400 volt must be taken in consideration. Cost of a floor may be added.



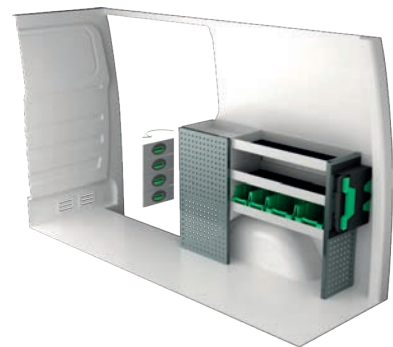
Art.No	LxDxH	Kg
F44080	2270x470x1220 mm	53



Art.No	LxDxH	Kg
F44081	1287x300x890 mm	37



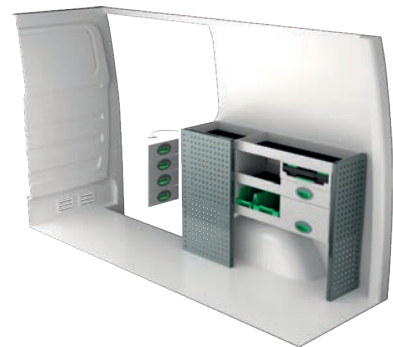
Art.No	LxDxH	Kg
F44082	2270x470x1220 mm	83



Art.No	LxDxH	Kg
F44083	1372x300x890 mm	43



Art.No	LxDxH	Kg
F44084	2270x300x1515 mm	89



Art.No	LxDxH	Kg
F44085	1287x300x890 mm	50



Art.No	LxDxH	Kg
F44086	2270x300x1220 mm	87

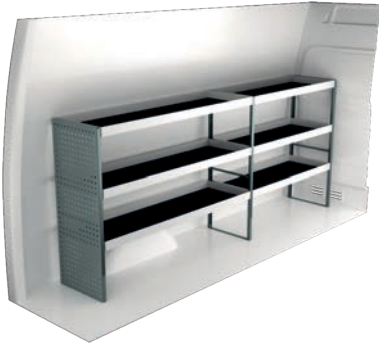


Art.No	LxDxH	Kg
F44087	1242x470x1220 mm	61

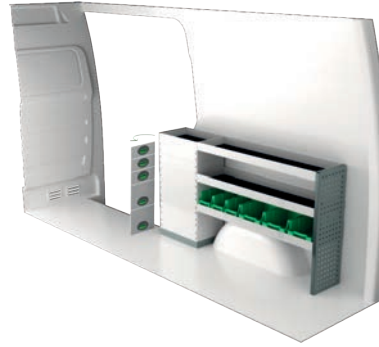
MERCEDES SPRINTER L2

For price information, mounting time and content in our van racking packages, scan the QR code on the first page.

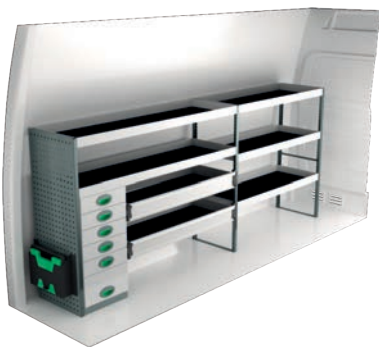
On electric and hybrid vans we recommend mounting by an experienced installer. Batteries and cable harnesses for approximately 400 volt must be taken in consideration. Cost of a floor may be added.



Art.No	LxDxH	Kg
F44040	2841x470x1220 mm	63



Art.No	LxDxH	Kg
F44041	1679x300x890 mm	52



Art.No	LxDxH	Kg
F44042	2841x470x1220 mm	108



Art.No	LxDxH	Kg
F44043	1711x300x1220 mm	70



Art.No	LxDxH	Kg
F44044	2841x300x1735 mm	118



Art.No	LxDxH	Kg
F44045	1778x470x855 mm	133



Art.No	LxDxH	Kg
F44046	3021x470x1510 mm	137

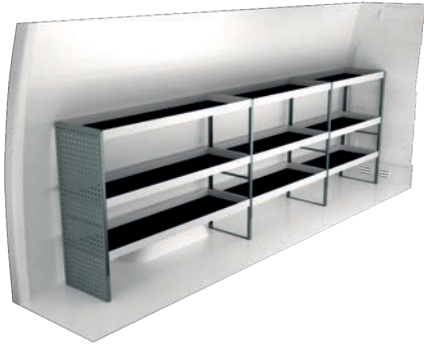


Art.No	LxDxH	Kg
F44047	1242x470x1220 mm	61

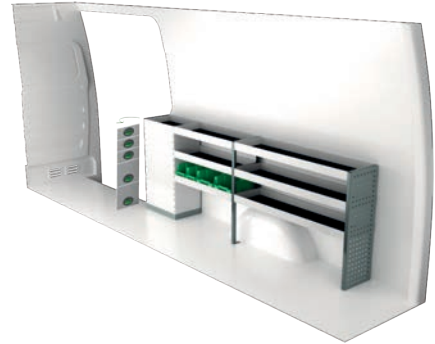
MERCEDES SPRINTER L3

For price information, mounting time and content in our van racking packages, scan the QR code on the first page.

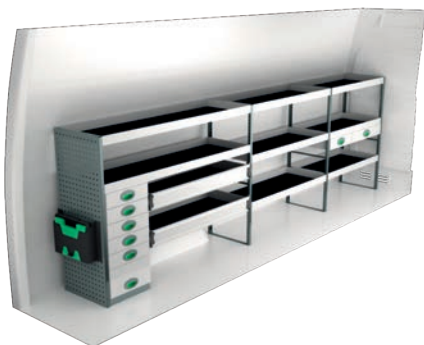
On electric and hybrid vans we recommend mounting by an experienced installer. Batteries and cable harnesses for approximately 400 volt must be taken in consideration. Cost of a floor may be added.



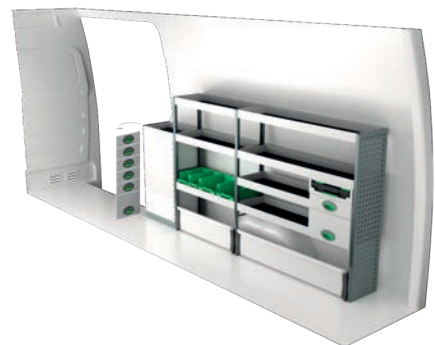
Art.No	LxDxH	Kg
F45000	3878x470x1220 mm	83



Art.No	LxDxH	Kg
F45001	2499x300x890 mm	61



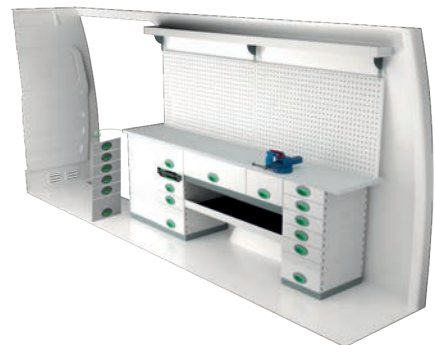
Art.No	LxDxH	Kg
F45002	3878x470x1220 mm	139



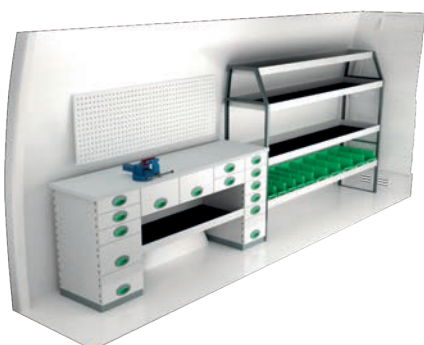
Art.No	LxDxH	Kg
F45003	2501x300x1220 mm	87



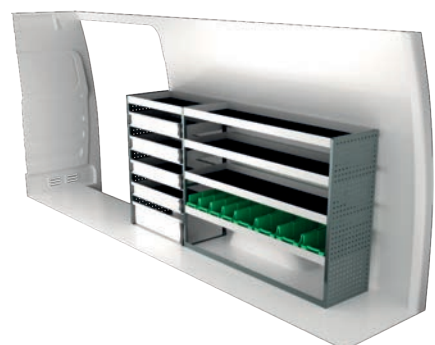
Art.No	LxDxH	Kg
F45004	3878x300x1735 mm	164



Art.No	LxDxH	Kg
F45005	2430x470x855 mm	193



Art.No	LxDxH	Kg
F45006	3894x470x1510 mm	190



Art.No	LxDxH	Kg
F45007	2450x470x1220 mm	93

INFORMATION



GENERALLY

The kits include what you see in the drawing as well as installation parts, rubber mats to all shelves and foam to the drawers.

System Edström Bilinredningar AB is certified according to SS-EN ISO 9001:2015 to secure the administrative quality and to give us the possibility to keep a high accuracy on deliveries.

All material used in System Edström can be recycled to 100%. We are also certified according to SS-EN ISO 14001:2015.



REMEMBER

Now that you have chosen to have System Edström in your vehicle you have taken the first and most important step to make your mobile workshop safe and functional. From here on it is up to you how safe and functional your working place will be.

Remember; You as the driver has the full responsibility if you or any one else is injured if the cargo is poorly secured. It is also your responsibility to make sure that the interior is mounted in the safest way possible whatever your choice of workshop, even if they are professionals with knowhow and long experience.

Make sure NOT to exceed the maximum payload of the vehicle.



SECURITY

We crash test our racking continuously at RISE Research Institute of Sweden AB. The crash tests are carried out according to the standard INRS NS 286 which applies to van racking.

Other types of tests are also carried out at test institutes, for example shake tests that simulate several years of use on the road. We also carry out our own tensile and pressure tests, to check, for example, the strength of load securing products.

Find out more about our company and products at www.systemedstrom.com.



Vice

Depth	Width	Height	Kg	Part.No
360	135	140	10,3	5004

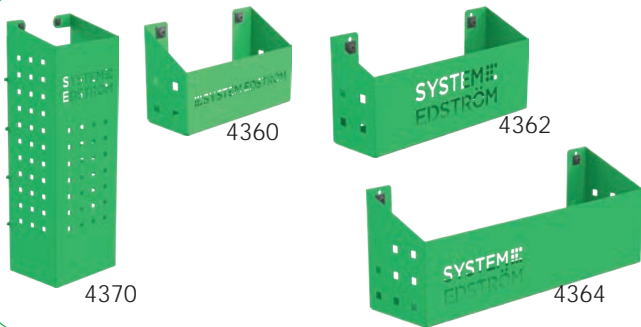
The forged vice is complete with pipe jaw and turning plate. Max opening 140 mm.



Vice Holders

Depth	Width	Height	⇔	Kg	Part.No
1110	170	195	600	9,4	5012
1110	170	80	600	8,9	5013

Plate measurement 170x158 mm. Cover 2950 is included.



Pegboard tray

Depth	Width	Height	Kg	Part.No
82	200	80	0,5	4360
82	285	102	0,8	4362
122	455	122	1,5	4364
153	179	575	3,0	4370

A number of different trays that solve (almost) all storage problems.



Internal ladder holder

Length	Kg	Part.No
2400	5,5	T8900

Store your ladder on the inside of the roof, pull it back to the rear door in a simple operation. The aluminum rail comes in two parts with a joining piece.

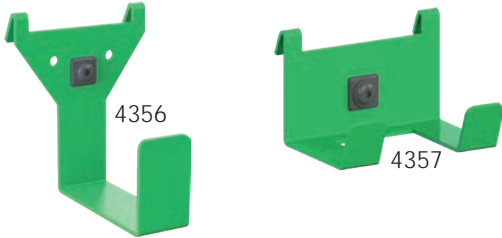


Hose/Cable rack

Depth	Width	Height	Kg	Part.No
79	267	168	0,5	4077

Tube holder

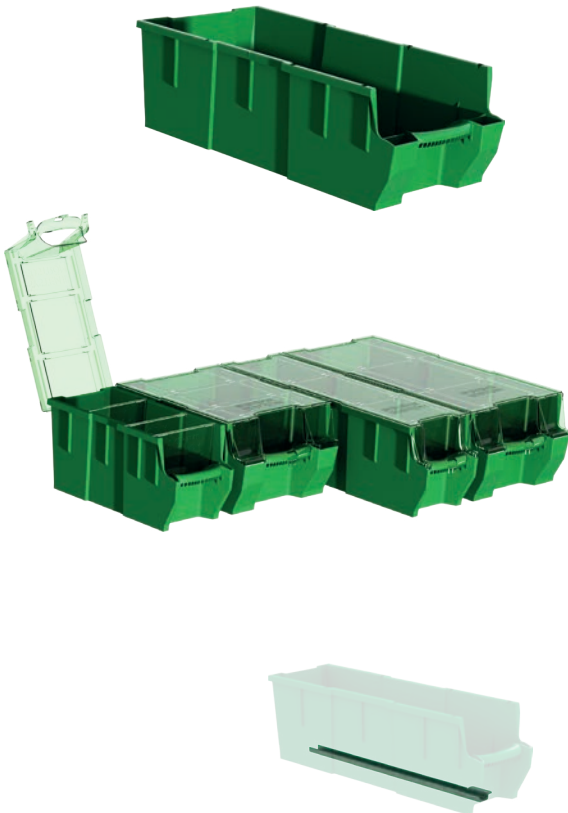
66	194	123	0,4	4349
----	-----	-----	-----	------



Universal hook

Depth	Width	Height	Kg	Part.No
85	80	100	0,2	4356
61	83	55	0,1	4357

Simplicity at its best, heavy duty hooks, to be mount on a pegboard or hang it on the edge of a shelf.



Plastic bin for shelves

Depth	Width	Height	Kg	Part.No
300	145	154	0,4	3050
300	235	154	0,5	3052
470	145	154	0,5	3055
470	235	154	0,5	3057

Transparent lid for plastic bins

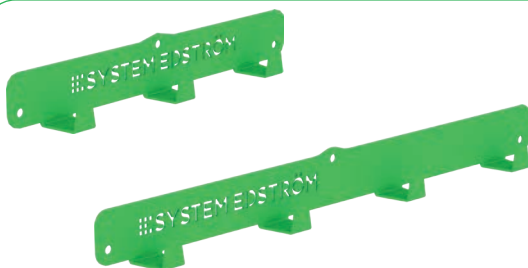
Depth	Width	Fits	Kg	Part.No
300	150	3050	0,2	3060
300	240	3052	0,2	3062
470	150	3055	0,2	3065
470	240	3057	0,4	3067

Dividers for plastic bins

Width	Height	Fits	Part.No
140	154	3050, 55	3070
230	154	3052, 57	3072

Bracket for dropfront shelves

Depth	Kg	Part.No
300	0,1	3081
470	0,2	3082



Clothes hook

Depth	Width	Height	Kg	Part.No
31	295	40	0,3	2706
31	465	40	0,5	2708

We call it a clothes hook but, needless to say, you can use it to hang up whatever you want on it.



Strap with brackets

Information	Width	Part.No
1200 mm, nylon strap	25	4365
1000 mm, elastic strap	25	4366

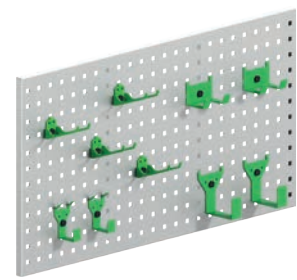
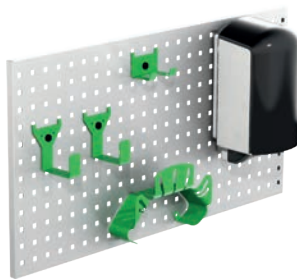
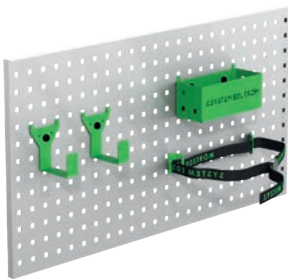
The brackets will fit on our pegboards.



Accessory package No. 1

Accessory package No. 2

Accessory package No. 3



Art Nr

F11001

Pegboard not included.

Art Nr

F11002

Pegboard not included.

Art Nr

F11004

Pegboard not included.

www.systemedstrom.com



WARRANTY



SAFETY



QUALITY

SYSTEM EDSTRÖM

SYSTEM EDSTRÖM BILINREDNINGAR AB
Raseborgsgatan 11
164 74 Kista
Sweden

CONTACT

Order +46 (0)10 102 95 00

Sales +46 (0)10 102 95 01

Switchboard +46 (0)8 590 920 20

info@edstrom.se